

# Rivacold STM

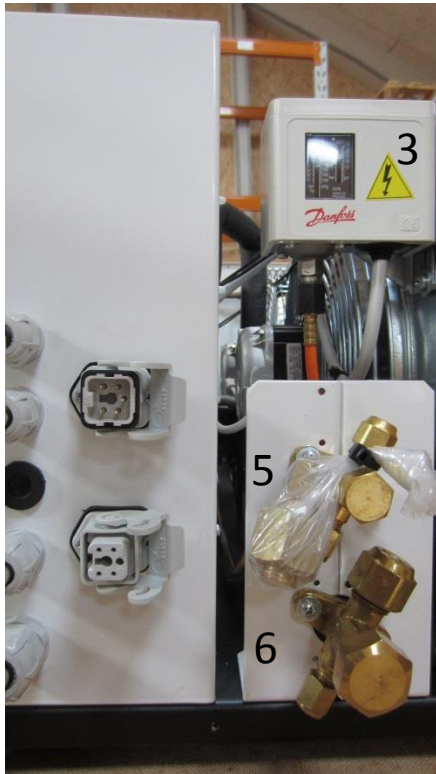
Dæncker Køleinventar Aps.



- 1 Startrelæ kompressor M1
- 2 Kompressor M1
- 3 El-styring
- 4 Magnetventil YVL
- 5 Kondensatorblæser M2 + M3
- 6 Højtrykspresostat
- 7 Påfyldning



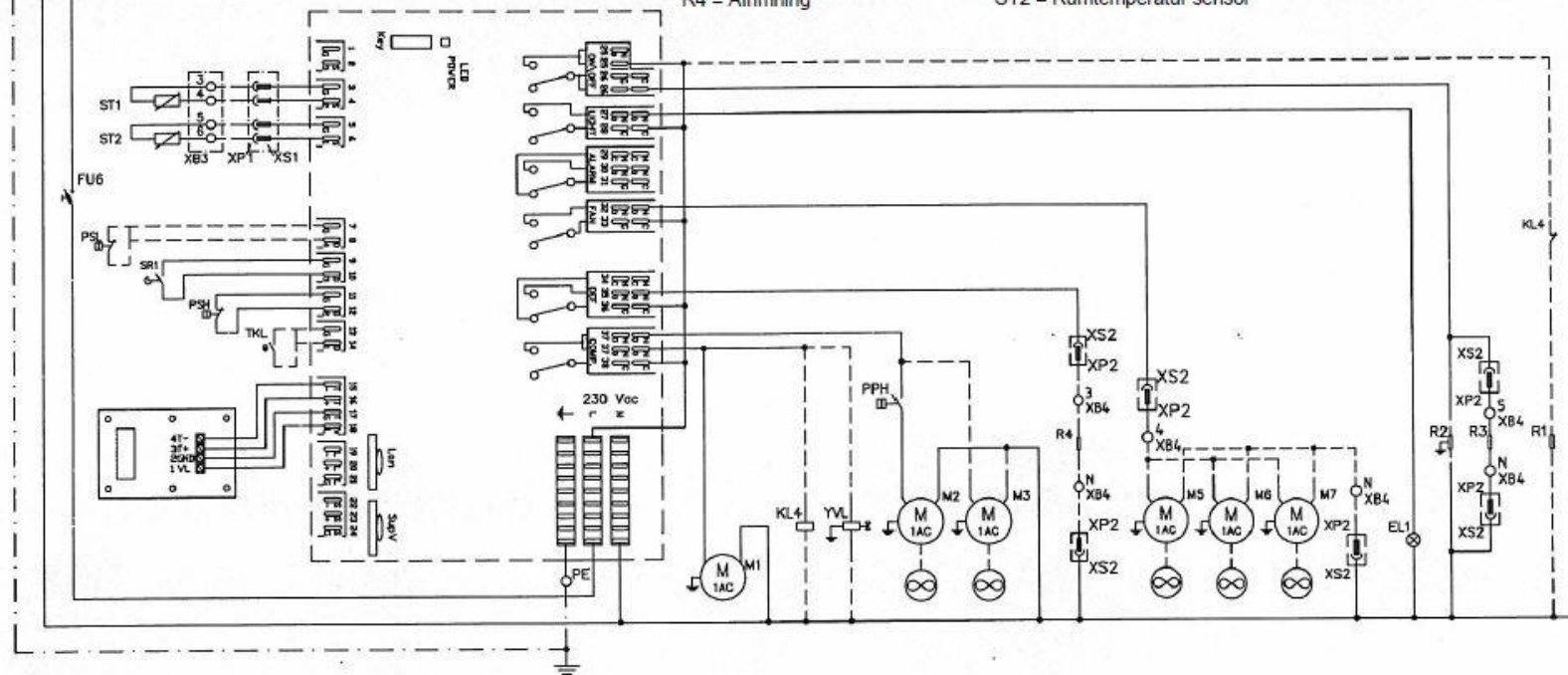
- 1 Startrelæ kompressor
- 2 Kompressor
- 3 Pressostat kondensatorblæsere ON/OFF (option)
- 4 Rivacold styring
- 5 Væskeledning
- 6 Sugeledning



# Eldiagram

IN 230V~50-60Hz+PE  
PE N F

- M1 = Kompressor
- M2-M3 = kondensatorblæsere
- M5-M6-M7 = Fordamperblæsere
- R2 = Dørvarme
- R3 = Afløbsvarme
- R4 = Afrimning
- YVL = Væskeventil
- PSH = Pressostat højtryk
- PSL = Pressostat lavtryk (option)
- PPH = Kondensatorblæsere trykswitch
- ST1 = Afrimning sensor
- ST2 = Rumtemperatur sensor
- FU6 = Sikring
- EL1 = Kølerumlys



LEGENDA:

KM1=TELERLUTTORE COMPRESSORE  
KM2=TELERLUTTORE RESISTENZE DI SBRINAMENTO  
FR1=RELE' TERMICO COMPRESSORE  
F1=KRWMAN  
RMB000001=CONTROLLO ELETTRONICO  
M1=COMPRESSORE  
M2-M3-N4=VENTOLE CONDENSATORE  
M5-M6-M7=VENTOLE EVAPORATORE  
R1=RESISTENZA CARTER  
R2=RESISTENZA PORTA  
R3=RESISTENZA SCARICO  
R4-5-6=RESISTENZE DI SBRINAMENTO  
YVL=ELETTROVALVOLA LIQUIDO  
YVC=ELETTROVALVOLA SBRINAMENTO  
PSH=PRESSOSTATO DI MASSIMA  
PSL=PRESSOSTATO DI MINIMA  
BPV=REGOLATORE DI VELOCITA' VENT. COND.  
PPH1-2-3=PRESSOSTATI VENTOLE CONDENSATORE  
POM=PRESSOSTATO DIFFERENZIALE OLIO

LEGEND:

KM1=COMPRESSOR SWITCH  
KM2=DEFROST HEATERS SWITCH  
FR1=COMPRESSOR THERMAL RELAY  
F1=KRWMAN  
ELECTRONIC CONTROL  
M1=COMPRESSOR  
M2-M3-M4=CONDENSER FANS  
M5-M6-M7=EVAPORATOR FANS  
R1=CRANKCASE HEATER  
R2=DOOR HEATER  
R3=DISCHARGE HEATER  
R4-5-6=DEFROST HEATERS  
YVL=LIQUID ELECTROVALVE  
YVC=DEFROST ELECTROVALVE  
PSH=HIGH PRESSURE SWITCH  
PSL=LOW PRESSURE SWITCH  
BPV=CONDENSER FANS SPEED VARIATOR  
PPH1-2-3=CONDENSER FANS PRESSURE SWITCHES  
POM=OIL DIFFERENTIAL PRESSURE SWITCH

SRI=MICRO SWITCH  
ST1=DEFROST PROBE  
ST2=TEMPERATURE PROBE  
TKL1=COMPRESSOR CLOGSON  
EL1=COLD ROOM LIGHT  
M1=COMPRESSOR  
M2-M3-M4=CONDENSER FANS  
M5-M6-M7=EVAPORATOR FANS  
R1=CRANKCASE HEATER  
R2=DOOR HEATER  
R3=DISCHARGE HEATER  
R4-5-6=DEFROST HEATERS  
YVL=LIQUID ELECTROVALVE  
YVC=DEFROST ELECTROVALVE  
PSH=HIGH PRESSURE SWITCH  
PSL=LOW PRESSURE SWITCH  
PPH=CONDENSER FANS SPEED VARIATOR  
PPH1-2-3=CONDENSER FANS PRESSURE SWITCHES  
POM=OIL DIFFERENTIAL PRESSURE SWITCH

COMPRESSOR/ COMPRESSOR	MRA	FUSIBLE/ FUSE FU6
CAE9460Z-F	4.14A	10A 0A
CAE4450Z-F	4.2A	10A 0A
CAE9470Z-F	5.6A	10A 0A
CAJ2432Z-F	6.26A	10A 0A
CAJ2446Z-F	7.47A	10A 0A
CAJ9510Z-F	8A	10A 0A
NJ9226GK-V-CSR	8.6A	16A 0A
NJ2212GK-A-CSR	9.7A	16A 0A
CAJ2464Z-F	9.7A	16A 0A
CAJ9513Z-F	10.1A	16A 0A

ESPX1B02004  
REV.00