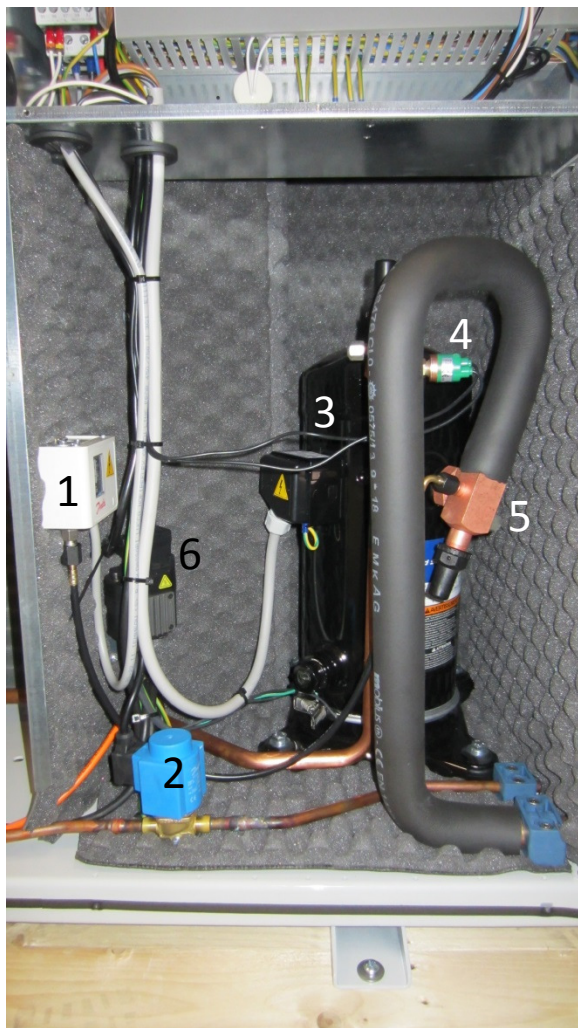


Rivacold THCM

Scrollkompressor



- 1 Receiver
- 2 Muffler(pulsationsdæmper)
- 3 Tørrefilter
- 4 Skueglas
- 5 Trykudligningsventil
- 6 Scroll kompressor
- 7 Kondensator
- 8 Væskemagnetventil



1. Lavtrykspresostat
2. Væskemagnetventil
3. Kompressor
4. Højtrykspresostat
5. Lukkeventil sugeledning
6. Kondensator blæser hastighedsregulator

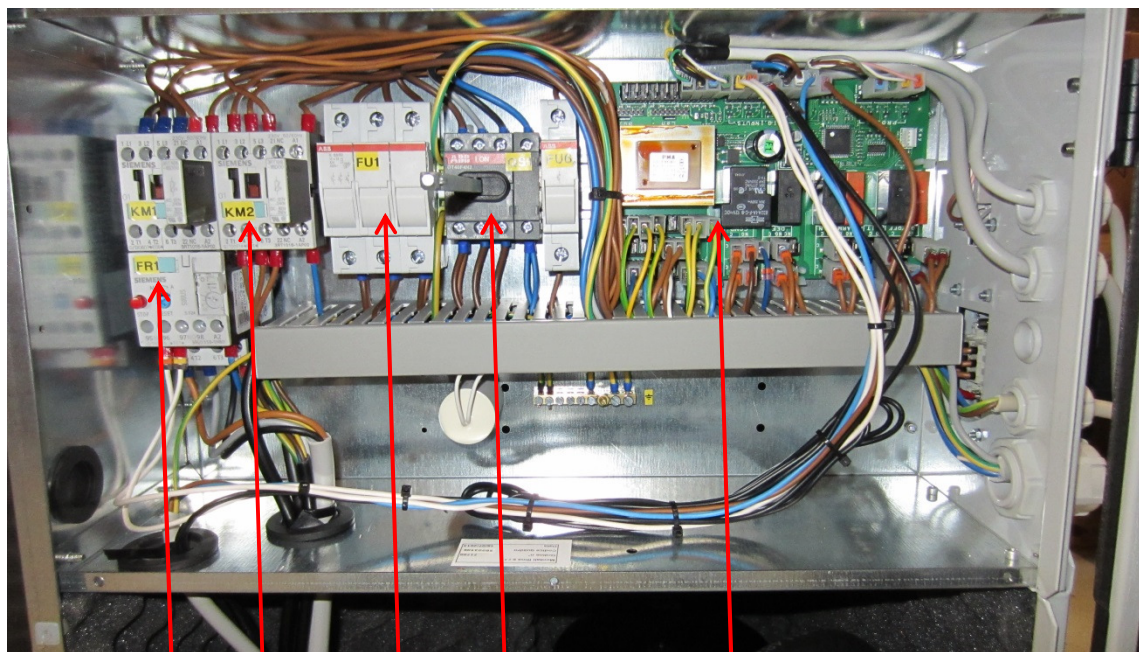


10. Kondensatorblæser





Betjenings og styreenhed



Kontaktor og termorelæ til kompressor

Kontaktor til afrimning

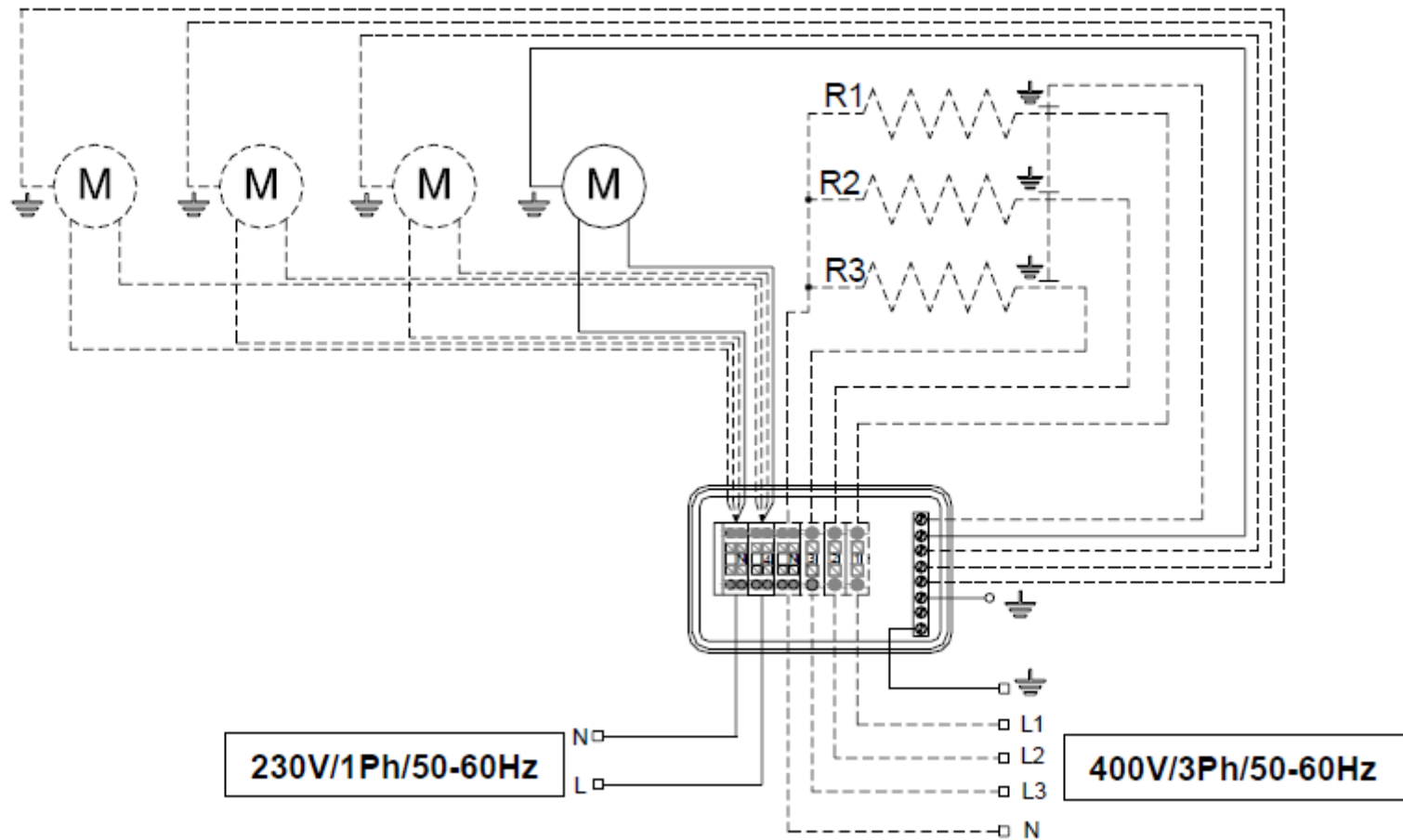
Sikring til kompressor og afrimning

Hovedafbryder

I/O styrekort

Eldiagram fordemper

Drawing 4



COMPRESSOR/ COMPRESSOR	MRA	FUSIBILE/ FUSE FU1	FUSIBILE/ FUSE FU6
TFH24B02-T	3.9A	6A aM	6A aM
TAJ45172-T	3.95A	6A aM	6A aM
TAJ45192-T	4.8A	6A aM	6A aM
TFH25112-T	5A	6A aM	6A aM
TFH45242-T	6.29A	10A aM	6A aM
TFH45312-T	8.2A	16A aM	6A aM
TFH45402-T	9.21A	16A aM	6A aM
TAG25162R-T	9.81A	16A aM	6A aM
TAG45532R-T	12A	20A aM	10A aM
TAG25222R-T	12.5A	20A aM	6A aM
TAG45612R-T	14A	20A aM	10A aM
TAG45682R-T	15.2A	20A aM	10A aM

ETHX2B06003
REV.00

LEGENDA:

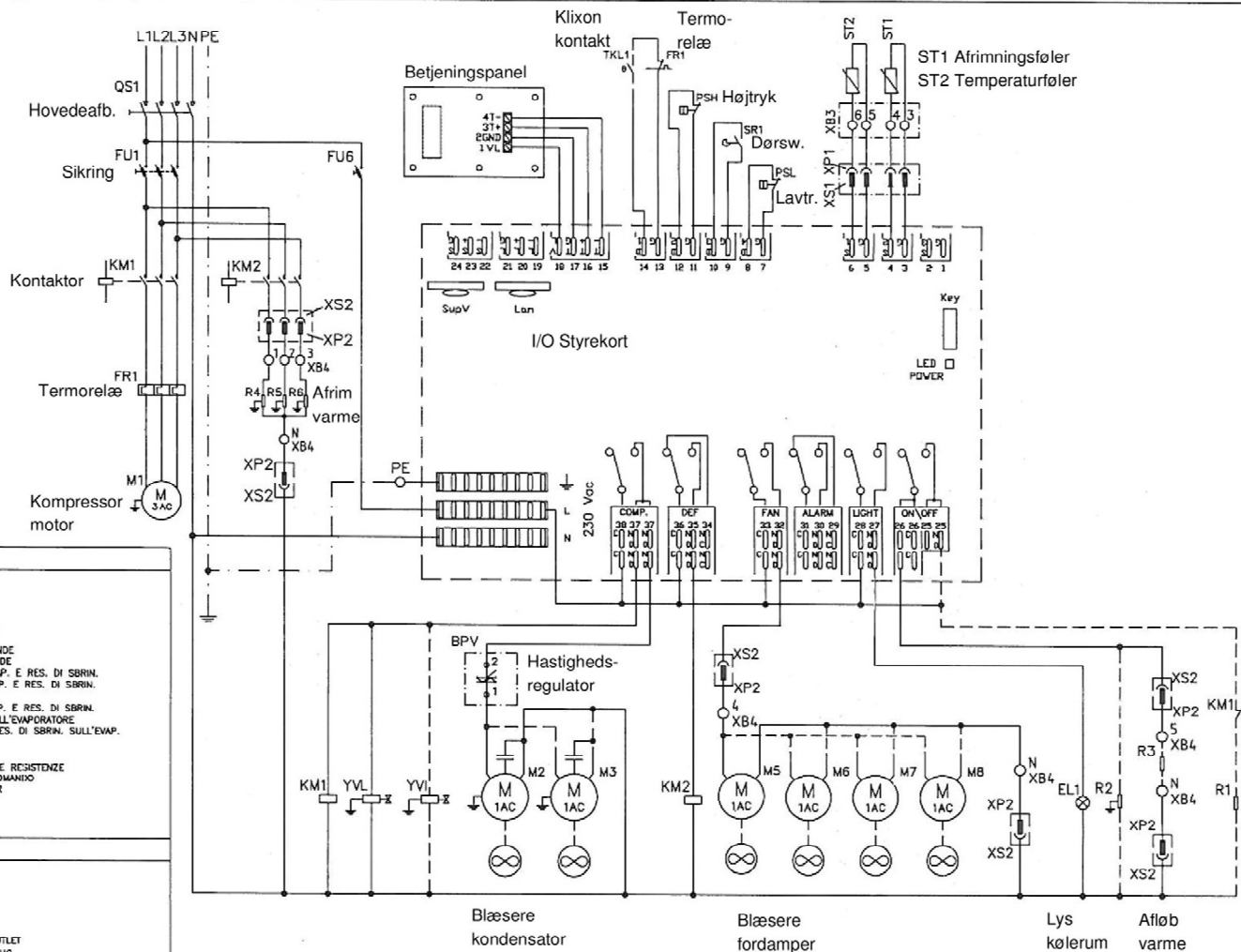
KM1=TELERUTTORE COMPRESSORE
KM2=TELERUTTORE RESISTENZE DI SBIRNAMENTO
FR1=RELE' TERMICO COMPRESSORE
F1=KRIMAN
FV9000001=CONTROLLO ELETTRONICO
M1=COMPRESSORE
M2-M3-M4=VENTOLE CONDENSATORE
M5-M6-M7=VENTOLE EVAPORATORE
R1=RESISTENZA CARTER
R2=RESISTENZA PORTA
R3=RESISTENZA SCARICO
R4-5-6=RESISTENZE DI SBIRNAMENTO
YVL=ELETTROVALVOLA LIQUIDO
YVC=ELETTROVALVOLA SBIRNAMENTO
YV=PRESSOSTATO DI MASSIMA
PSL=PRESSOSTATO DI MINIMA
PPH1-2=PRESSOSTATI VENTOLE CONDENSATORE
BPV=REGOLATORE DI VELOCITA' VENT. COND.
PPH1-2=PRESSOSTATI VENTOLE CONDENSATORE
PDM=PRESSOSTATO DIFFERENZIALE OLIO

LEGENDA:

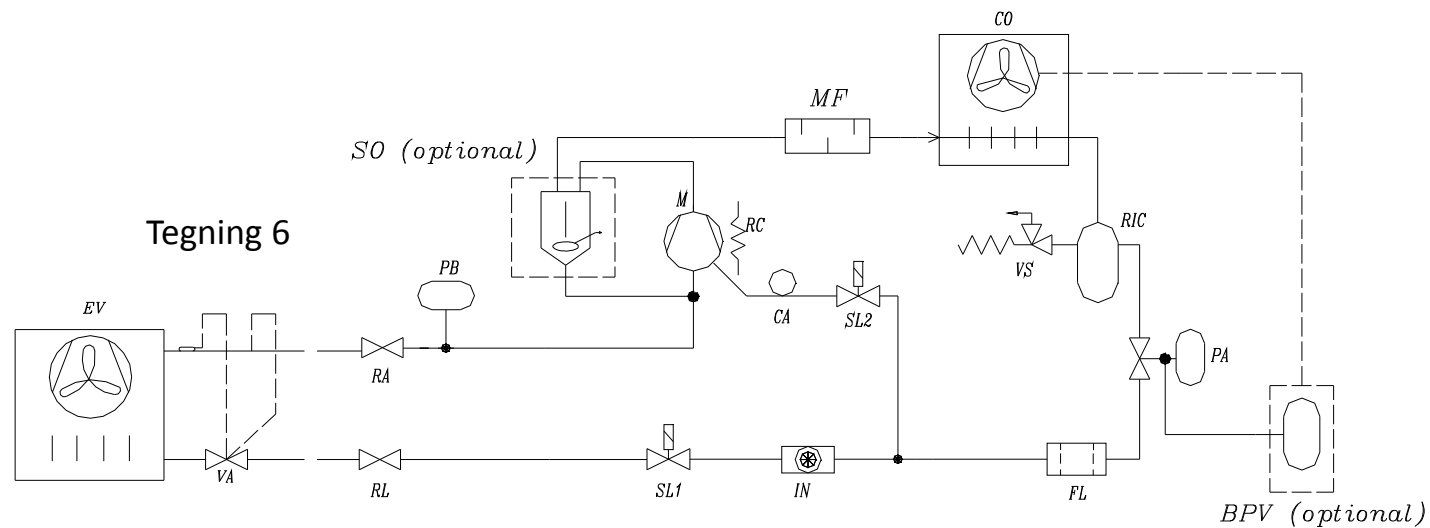
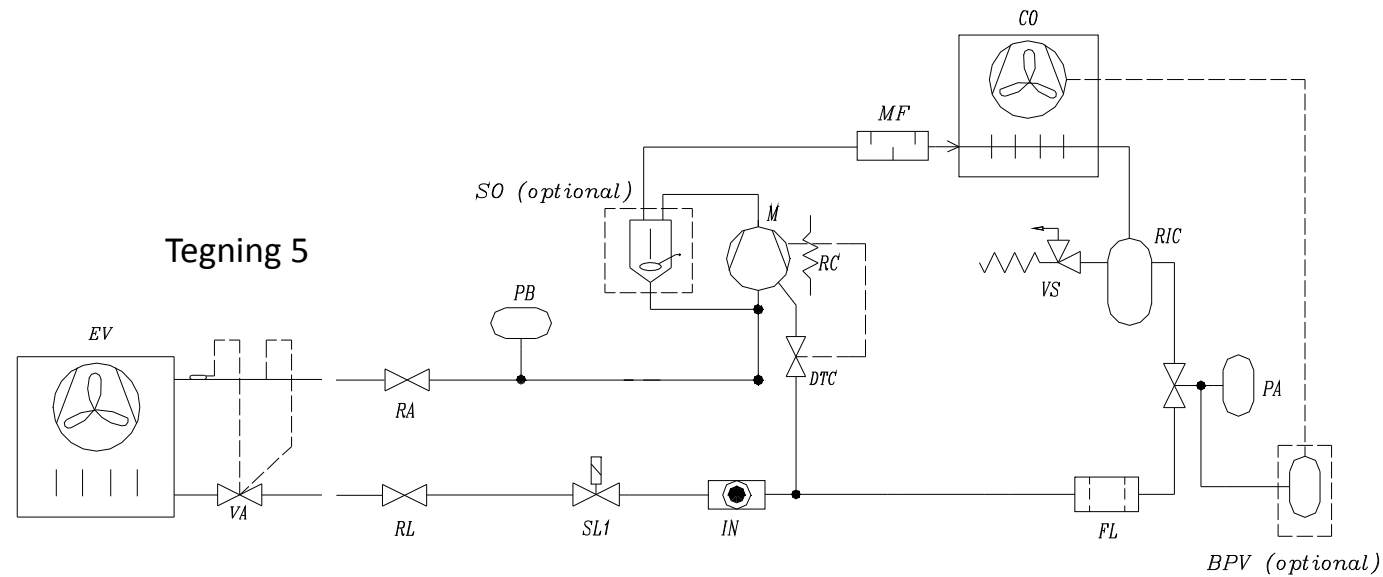
KM1=COMPRESSOR SWITCH
KM2=DEFROST HEATERS SWITCH
FR1=COMPRESSOR THERMAL RELAY
F1=KRIMAN
ELECTRONIC CONTROL
M1=COMPRESSOR
M2-M3-M4=CONDENSER FANS
M5-M6-M7=EVAPORATOR FANS
R1=CRANK CASE HEATER
R2=DOOR HEATER
R3=DISCHARGE HEATER
R4-5-6=DEFROST HEATERS
YVL=LIQUID ELECTROVALVE
YVC=DEFROST ELECTROVALVE
PSH=HIGH PRESSURE SWITCH
PSL=LOW PRESSURE SWITCH
PPH1-2=CONDENSER FANS PRESSURE SWITCHES
PDM=OIL DIFFERENTIAL PRESSURE SWITCH

SR1=MICRO PORTA
ST1=SONDA SBIRNAMENTO
ST2=SONDA TEMPERATURA
TKL1=CLUSCON COMPRESSORE
EL1=LUCE CELLA
XS1=PRESA CONNETTORE SONDE
XP1=SPINA CONNETTORE SONDE
XS2=PRESA CONN. VENT. EVAP. E RES. DI SBIRN.
XP2=SPINA CONN. VENT. EVAP. E RES. DI SBIRN.
XB1=MORSSETTIERA SONDE
XB2=MORSSETTIERA VENT. EVAP. E RES. DI SBIRN.
XB3=MORSSETTIERA SONDE SULL'EVAPORATORE
XB4=MORS. VENT. EVAP. E RES. DI SBIRN. SULL'EVAP.
HL1=SPM RETE
FV1=MONITOR DI TENSIONE
FU1=FUSIBILI COMPRESSORE E RESISTENZE
FU6=FUSIBILE CIRCUITO DI COMANDO
KL4=RELE' RESISTENZA CARTER

SR1=MICRO SWITCH
ST1=DEFROST PROBE
ST2=TEMPERATURE PROBE
TKL1=COMPRESSOR CLUSCON
EL1=COLD ROOM LIGHT
XS1=PROBES CONNECTOR OUTLET
XP1=PROBES CONNECTOR PLUG
XS2=CONN. OUTLET FOR EVAP. FANS AND DEFROST HEATERS
XP2=CONN. PLUG FOR EVAP. FANS AND DEFROST HEATERS
XB1=TERMINAL BOARD FOR PROBES
XB2=TERMINAL BOARD FOR EVAP. FANS AND DEFROST HEATERS
XB3=TERMINAL BOARD FOR PROBES IN THE EVAP.
XB4=TERM. BOARD EVAP. FANS AND DEFROST HEATERS IN THE EVAP.
HL1=MAINS PILD LIGHT
FV1=VOLTAGE MONITOR
FU1=COMPRESSOR AND HEATERS FUSES
FU6=CONTROL CIRCUIT FUSE
KL4=CRANKCASE HEATER RELAY



- Tegning 5: Kølediagram med Scrollkompressor og væske indsprøjtning ventil (DTC)
 - Tegning 6: Kølediagram med Scrollkompressor og kapillar indsprøjtning
 - Tegning 7: Kølediagram med Scrollkompressor eller stempelkompressor
- VIGTIGT: Kølediagrammer til ikke standard enheder medleveres separat.



Internet links: